

Case Study: Cleaning Cabin

Project of: ROTH Kunststoffen (CH)
Experience in the sector: +20 years
Experience with Paneltim®: 5 years

ROTH KUNSTSTOFFBAUAG

Project

Creation of a cleaning booth to degrease produced parts and tools.

Location

Switzerland (CH)

Measurements

3 m x 4 m x 3 m

Challenge

The area must be resistant to degreasers.

Product

Paneltim® Lightweight & Antislip

Material

PP copo

Thickness

50 mm

Measurements

Lightweight:

2,600 mm x 1,000 mm

Antislip: 1,200 mm x 1,000 mm

Internal cells

Lightweight: 100 mm x 50 mm

Antislip: 50 mm x 50 mm

Plastic polypropylene (PP) is often used in constructions because it is chemically resistant and is always easy to clean. Due to these properties, factories often use PP cleaning or spray booths for a broad spectrum of purposes. Roth Kunststofftechnik made a cleaning cabin of 3 m x 4 m x 3 m with Paneltim® panels made of PP copo. The cleaning cabin is used for degreasing metal parts.

Rigid and light panels

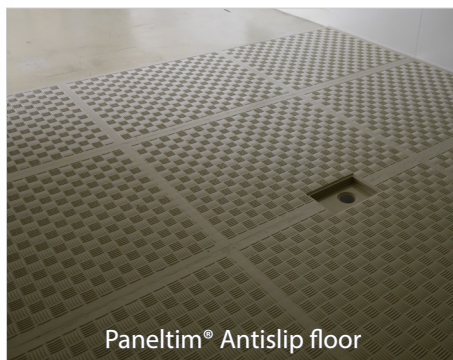
A brick wall cabin was not an option because of the expensive coating that would be needed to make it resistant to degreasers. Solid plastic sheets were also not possible due to their limited stability. Due to their internal cell structure, the Paneltim® panels are rigid, strong and light. Kurt Roth, project manager: "The Paneltim® panels are so light and rigid that they could easily be set straight, held and welded by 2 people. This saved an enormous number of working hours."

Modular construction

It was determined extensively in advance how the space and material could be used optimally. This takes into account the existing water drainage and a small slope under which the cabin had to be placed. The walls of the cabin were made to measure in the workshop and assembled on site by extrusion welding. Paneltim® panels can easily be welded in any area. As a result, Roth only needed half the expected assembly time.

Combination of panels

The walls of the cleaning cabin are made of Paneltim® Lightweight panels. Roth used Paneltim® Antislip panels with a five bars structure for the floor. A solid panel was combined with Paneltim® to make the gutter.



Paneltim® Antislip floor



Freestanding cabin

