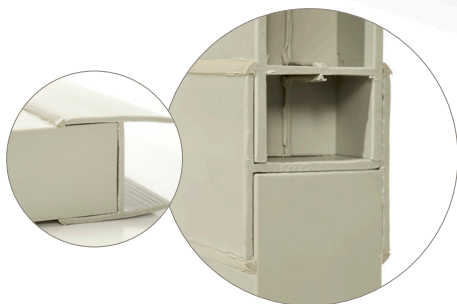


# PANELTIM<sup>®</sup>

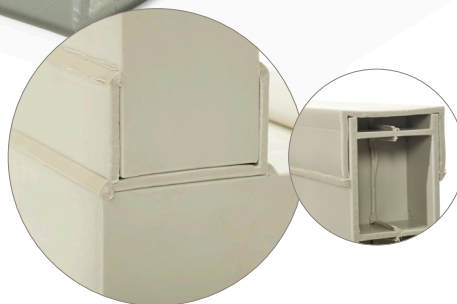
Pioneer in plastic sandwich panels



## Paneltim<sup>®</sup> PP profiles



**PP H-PROFILE**  
to connect panels



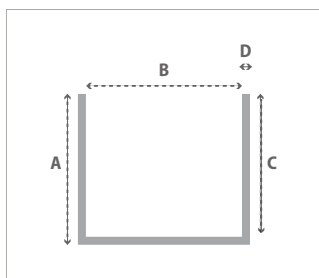
**PP U-PROFILE**  
to connect panels and  
to cover open cells

# Paneltim® PP profiles

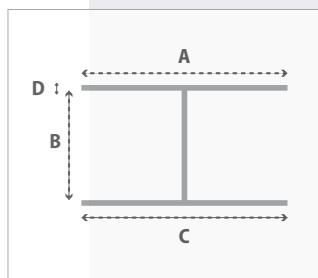
Paneltim® PP H- and U-profiles significantly speed up the construction of structures with Paneltim® panels. The profiles are both strong and durable, and easy to process and clean. With these profiles, there really are no boundaries to creativity with Paneltim® panels.

## DIMENSIONS AND COLOURS

Paneltim® PP U-profile



Paneltim® PP H-profile



Profile	A	B	C	D	Length	Colours
U-profile	34 mm	50 mm	30 mm	4 mm	3000 mm	White (RAL 9010) Beige (RAL 7032)
H-profile	64 mm	50 mm	64 mm	4 mm	3000 mm	White (RAL 9010) Beige (RAL 7032)

## MATERIAL

Paneltim® PP H- and U-profiles are made of polypropylene copolymer (PP COPO) and are coloured throughout. The characteristics of PP COPO are that it is very strong, wear-resistant and easy to clean. The addition of UV stabiliser means the profiles are also UV-resistant.

## BENEFITS

- Adhesion with PP welding wire to PP Paneltim® panels
- Time savings through simple processing
- Windproof seams
- Prevents penetration of dirt and bacteria
- UV resistant
- Low maintenance
- Shockproof

## ATTENTION

- Not suitable for liquid applications
- Not suitable for load bearing applications
- Pay attention to the expansion under heat

## APPLICATIONS

### Connecting panels

PP H- and U-profiles make it quick and easy to connect Paneltim® panels.

### Fixing panels to floors, walls and ceilings

Screw U-profiles against floors, walls and ceilings, place the Paneltim® panels in them and weld them to the profile.

### Optimum finish

Any open cells of a cut-to-size Paneltim® panel can easily be covered with a U-profile.

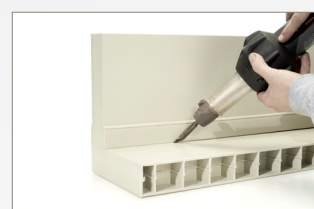
PP H- and U-profiles ensure a perfect finish. Once the profiles are welded to the panels, dirt can no longer get in.

## QUICK ASSEMBLY WITH WIRE WELDS

With a triangular PP welding wire of 5.0 x 3.0 x 3.0 mm, you can quickly and easily create a virtually seamless transition between the profile and the plastic panel.



NECESSARY MATERIALS



TACKING



SURFACE SCRAPING



SURFACE DEGREASING AND CLEANING



CORRECT WELDING HEAD INSTALLMENT



WIRE WELDING



Mail: [sales@paneltim.com](mailto:sales@paneltim.com)

**WWW.PANELTIM.COM**