

# PANELTIM<sup>®</sup>

Pioneer in plastic sandwich panels



## Paneltim<sup>®</sup> ULTRALIGHT

**EVEN LIGHTER,  
SURPRISINGLY STRONG!**

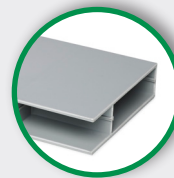
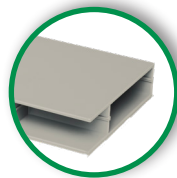
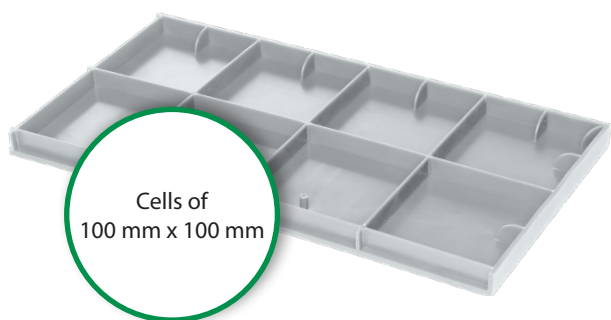


# Paneltim® Ultralight

AVAILABLE IN DIFFERENT COLOURS & SIZES

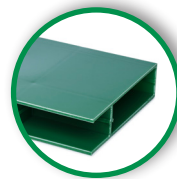
## SPECIFICATIONS

Thickness:	35 mm
Size:	1,200 mm x 800 mm 1,200 mm x 1,000 mm
Weight:	8.2 kg/m <sup>2</sup>
Cells:	100 mm x 100 mm
Wall thickness:	3,5 mm



BEIGE

GREY



GREEN



WHITE



BLACK

Material:

PP COPO | HDPE

Prime | Near-to-prime | Recy

Recycling-Codes:



NEW

## A NEW PANEL AT THE REQUEST OF CUSTOMERS

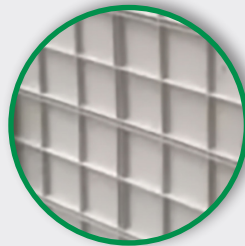
The Paneltim® Ultralight panel is the youngest member of our family. It arose from demand from customers who were looking for a solution to make certain applications even lighter. Tests showed that 100 mm x 100 mm cells are still strong enough for a range of applications where light weight is important.

### MAIN BENEFITS

- ✓ Lightweight
- ✓ Flexible dimensions
- ✓ Optimal hygiene
- ✓ Less material waste
- ✓ Corrosion-resistant
- ✓ 100% Recyclable
- ✓ Long lifespan

### FLEXIBLE DIMENSIONS

The Paneltim® Ultralight panel has three double ribs in the width and one in the length. This allows you to easily saw the panel into various standard sizes while the edges remain closed. Panels of 40 cm, 50 cm and 60 cm high can be made with almost no wasted material.



## CUSTOMERS SEE POTENTIAL IN PANELTIM® ULTRALIGHT FOR ...

### ... Agricultural applications

Pen partitions for goats, dogs, calves, cats, sheep, pigs ...

### ... Infrastructure

Pump cabins, trailers, site containers, non-load-bearing walls, toilet trailers, planters, beach houses, smoking houses, walls around jacuzzis, saunas, cable trays, hallways, doors, gates, pantries, tool boxes, transport boxes, (walls of) machines, billboards, dug-outs, garden furniture (such as tables, benches, picnic tables), wall coverings (such as car washes) ...

### ... Air

Air ducts, air filters, cooling installations, heat recovery channels, dust filters, ventilation ducts, odor filters ...

### ... Sanitary areas

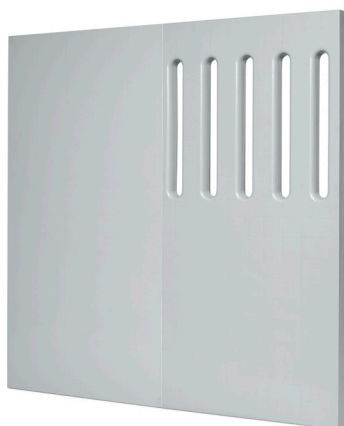
Hygiene locks, toilet areas, wash basins, shower cubicles, sanitary blocks ...

### UV PROTECTION

Paneltim® Ultralight prime panels are always provided with UV stabilization. The other materials are also available with UV stabilizers on request. Contact Paneltim for more information.

# Paneltim® Ultralight

## PANELTIM® ULTRALIGHT IN COMBINATION WITH PANELTIM® VENTI®



Paneltim® Ultralight can be perfectly combined with Paneltim® Venti® panels. Paneltim® Venti® panels are provided with a row of vertical openings that are 30 mm wide and 350 mm high, every 100 mm.

This combination offers you a solution for situations where air circulation or light are important.

## EASY PROCESSING OF THE 35 MM PANEL

Paneltim® Ultralight panels are easily processed with standard hand tools such as a saw, a drill, screws, and by milling and welding. The panels can be welded to various dimensions using three welding methods: wire welding, extrusion welding, and mirror welding. Due to the panels' lightweight, large dimensions created in this way are surprisingly easy to handle.



### PRACTICAL TIP

Cutaway as few ribs as possible and avoid cells that are too large. So always try to keep cells of 100 mm x 100 mm. This way, the panel retains its strength.



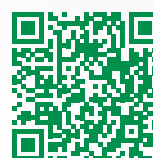
wire welding



extrusion welding



mirror welding



Mail: [sales@paneltim.com](mailto:sales@paneltim.com)  
**WWW.PANELTIM.COM**