

Paneltim® Base

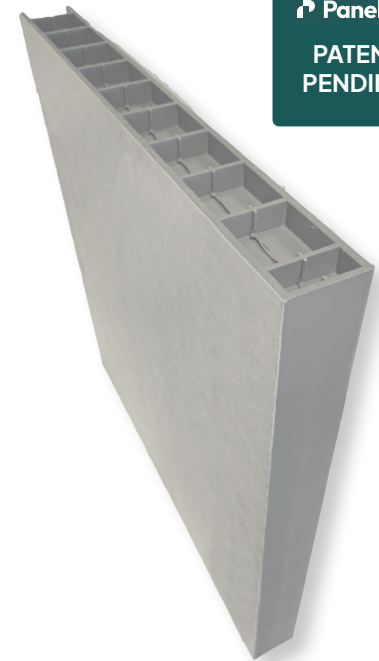
Polypropylene structural panel with double sided polyester backing

Discover the Versatility of Our Laminated Structural Plastic Panels

Our laminated structural plastic panels are manufactured through a continuous lamination process, where a polyester (PES) backing is applied to the Paneltim® structural panels.

Features of the Paneltim® Base Panel

- **Robust Core:**
The panel consists of a hollow core structure, 50mm thick with outer wall thicknesses of 4.5 mm, (also known as the Paneltim® Multipower panel) resulting in a sturdy panel suitable for withstanding for instance permanent water pressure.
- **Fabric Backing:**
Both sides of the core panel are laminated with a 100-gram layer of polyester non-woven fabric.
- **Strong Adhesion:**
The bond between the PP core and the Polyester backing is achieved using a polyolefin adhesive film during a patented lamination process. This film is heated and melted during lamination, resulting in a thermoplastic welding connection.
- **Workability:**
The structural panels can be easily processed through CNC milling, sawing, and different techniques of welding (butt-, extrusion-, hot air-welding)



Paneltim
PATENT
PENDING

Paneltim Base

Advantages:

- **Adhesiveness:**
Due to the properties of polyester and the fiber structure of the non-woven fabric, this outer backing is highly suitable as a base layer for bonding and glueing, allowing functional or aesthetic layers to be applied.
- **Made to measure work:**
These panels offer the same processability possibilities as conventional Paneltim® panels when taking into account some tricks. Ask our sales team for more information on your specific project requirements or check our processing guide.
- **Lightweight and Recyclable:**
Our panels are a lightweight and recyclable alternative to plywood, concrete panels, or other conventional solid sheets or sandwich panels. Offcuts can be recycled via our buy back program.

Applications:

- Interior and exterior furniture
- Covered liquid tank constructions and swimming pools
- Exhibition and event constructions
- What is your application?

Choose our Polyester backed structural panels for a sustainable, versatile, and aesthetic solution for all your construction and design needs.

Specifications

Backing

Backing Material	Polyester
Backing thickness	0.5 mm
Backing color	White
Backing type	Needle punched non-woven – 100 gram/m²
Backing application	Double sides

Core

Core material	Polypropylene (non-PTS* prime) – with UV additive
Core weight	12.8 kg/m²
Core thickness	50 mm
Core cell structure	50 mm x 50 mm
Core exterior wall thickness	4.5 mm
Core color	RAL 7001 (grey UV)
Dimensions	2600 mm x 1000 mm
Recycling	Recyclable, dispose in accordance with local instruction/regulations

*PTS = Paneltim Technical Standard

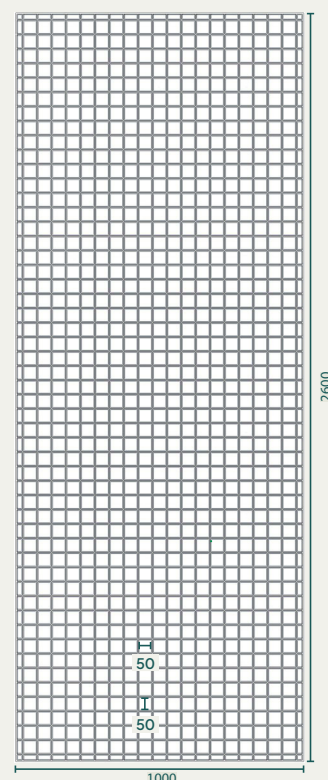
Storage

The panels should be stored flat in a dry and covered area. Make sure to protect the panels from exposure to UV and moisture. If surface moisture is present, dry prior to use.

Disclaimer

This information contains only typical properties of the products. This means these values can deviate. It is the customer's responsibility to inspect and test the product(s) in order to establish the suitability of the product(s) for its and its customers particular purposes. The customer is responsible for the appropriate, safe and legal use while processing and handling all product(s) purchased from us. Nothing herein is intended to be nor shall it constitute a warranty whatsoever, in particular, warranty of merchantability or suitability for a particular purpose.

INTERNAL STRUCTURE



THE KEY REASONS FOR CHOOSING PANELTIM® PANELS

Light, yet strong

Due to their internal cell structure (50 mm x 50 mm) of Paneltim® laminated panels are light, yet sturdy and strong.

Easy to work with

Paneltim® panels are easy to work with using standard hand tools such as saws, drills and screws, and by milling. Panels can be joined together to whatever dimensions required by means of plastic welding.

Quick assembly

Large surface areas created in this way can still be assembled quickly because Paneltim® panels are so light. Pipes and control boxes are quick and easy to install on Paneltim® partitions and walls – ideal in corridors and technical rooms.

