

# PANELTIM<sup>®</sup>

Pioneer in plastic sandwich panels

## Paneltim<sup>®</sup> Agro Panels



[WWW.PANELTIM.COM](http://WWW.PANELTIM.COM)





# Content

<b>Paneltim® TriPower</b>	<b>5</b>
<b>Paneltim® Ultralight</b>	<b>9</b>
<b>Paneltim® Lightweight</b>	<b>13</b>
<b>Paneltim® Multipower</b>	<b>17</b>
<b>Paneltim® Venti®</b>	<b>21</b>
<b>Paneltim® Antislip</b>	<b>25</b>
<b>Profiles</b>	<b>29</b>
<b>Raw materials for Paneltim® panels</b>	<b>33</b>
<b>Production: from granule to panel</b>	<b>35</b>

Paneltim® panels are available in different thicknesses, sizes, colors and internal cell structures.







# Paneltim® TriPower



# Paneltim® TriPower



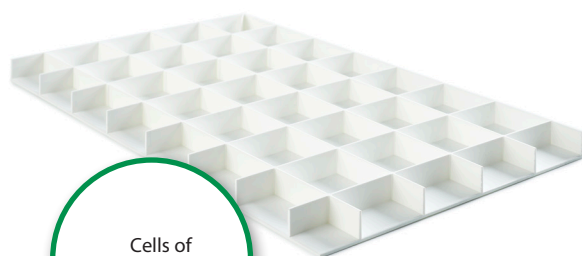
## THE TRIPower PANEL IN DETAIL ...

Paneltim® TriPower panels have been designed with our US partners in mind.

Surface	Edges	Material	Thickness (inch)	Cells (inch)	Dimensions (inch x inch)	Wall thickness (inch)	Weight (lb/ft <sup>2</sup> )
2 smooth faces	4 closed smooth edges	PP	2"	3" x 3"	96" x 48"	0.14"	2.0 lb/ft <sup>2</sup> typ.
					96" x 40"		
			3/4"		96" x 48"		1.6 lb/ft <sup>2</sup> Typ
					96" x 40"		

Other colours also available on request with a minimum order quantity.

## CELLS



Cells of  
3" x 3"

## COLORS

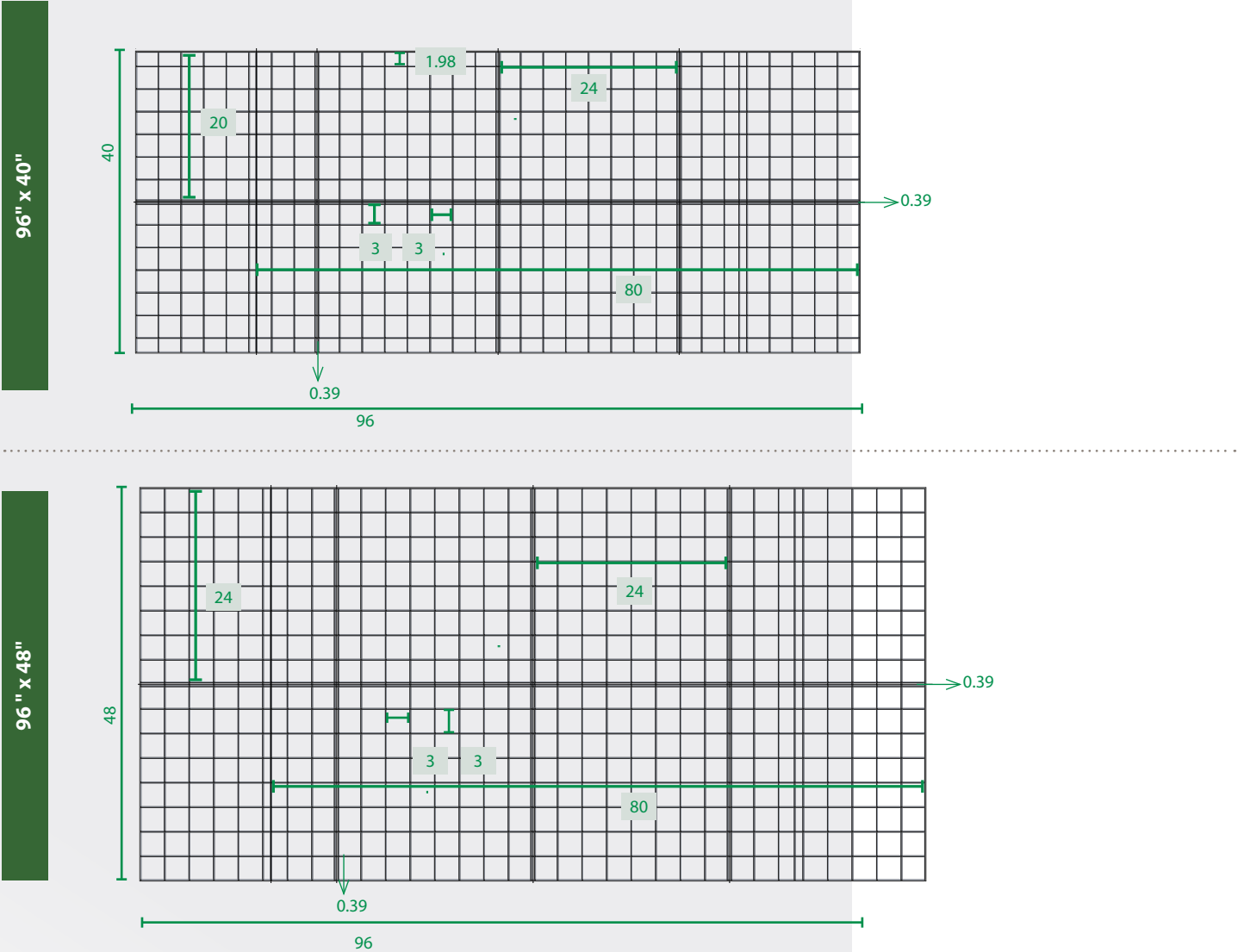
Material	PP		
Colours	Prime	NTP	Recy
White RAL9010 UV	X	X	✓

The above colours are indicative only and do not represent true colours.  
With recycled panels, variation in colours and colour tones is possible.  
You will find the lead time and minimum order quantities in the price list. Not every colour is available in every size. The panels are available in other colours on request. Contact us for more information.

SCAN THE CODE & FIND OUT  
MORE ABOUT THE TRIPower  
PANEL!



THE PANELTIM® TRIPower PANEL, A LOOK INSIDE\*:



\*All sizes are given in inch.



## REASONS FOR CHOOSING THE PANELTIM® MULTIPOWER PANEL:

- ✓ North American 4' x 8' format
- ✓ Light yet rigid
- ✓ As strong in length as in width
- ✓ Weldable to any size
- ✓ Can be used in confined spaces
- ✓ Corrosion resistant
- ✓ Time savings due to short welding cycle
- ✓ Multiple double ribs
- ✓ 100% recyclable

## FLEXIBLE MEASUREMENTS

With double ribs on 2-foot increments it's child's play to make a panel fit your specific needs: one saw cut produces two closed edges. Sealed edges will maintain the panel's internal integrity, preventing dirt and bacteria from getting in.

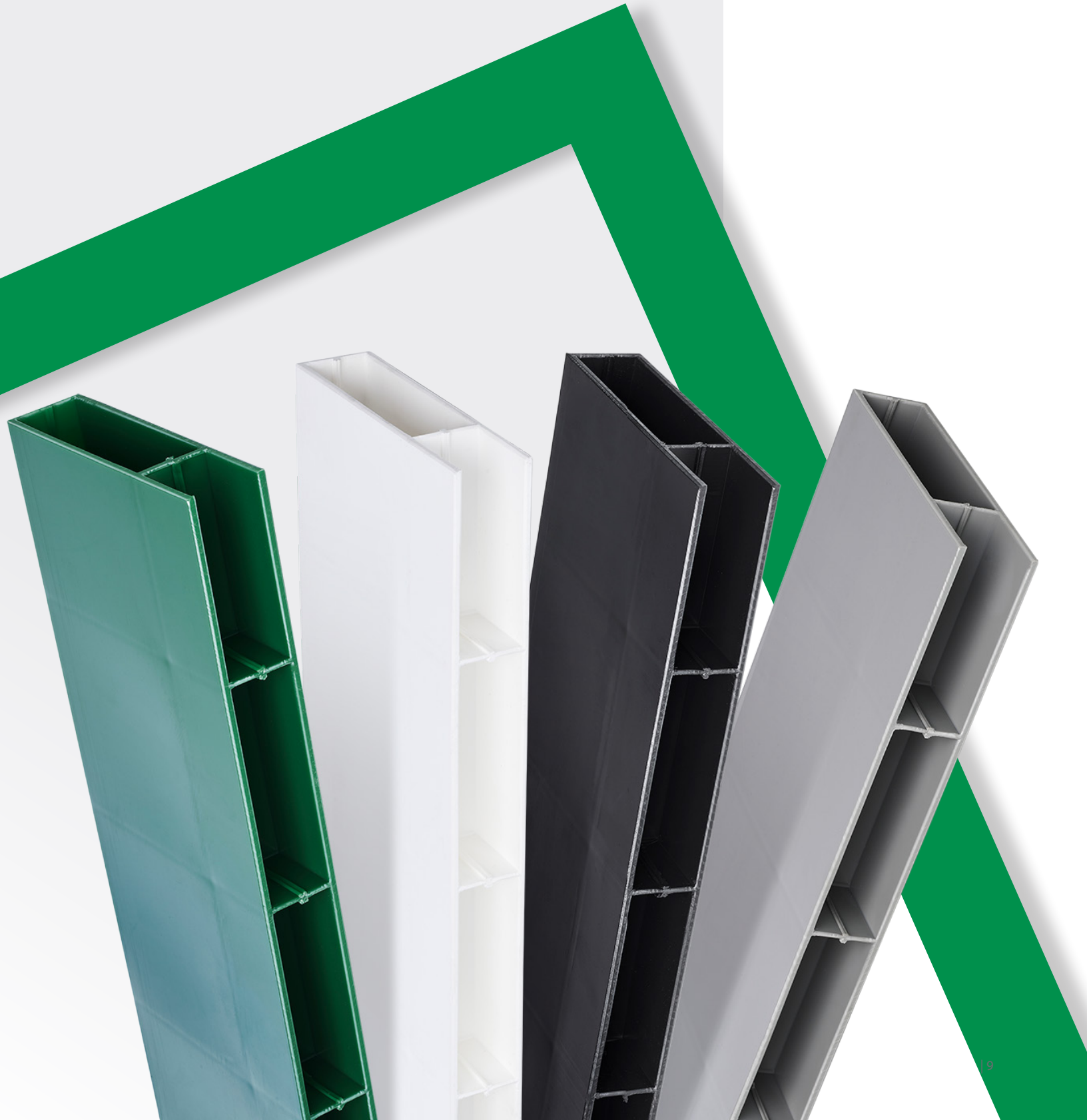


## 100% RECYCLABLE

TriPower Panels are made from recycled materials reducing the carbon footprint of production and your application. Above that, TriPower panels are made from only 1 material so they can easily be recycled after use.



# Paneltim® Ultralight



# Paneltim® Ultralight

## THE ULTRALIGHT PANEL IN DETAIL ...

Paneltim® Ultralight panels are the lightest and most economical in the range thanks to their internal cell structure of 4" x 4". Yet they remain strong enough for a wide variety of lighter duty applications.

Surface	Edges	Material	Thickness (inch)	Cells (inch)	Dimensions (inch x inch)	Wall thickness (inch)	Weight (lb/ft²)
2 smooth faces	4 closed smooth edges	PP	1-3/8" nom.	4" x 4" nom.	47.2" x 31.5"	0.138	1.679
					47.2" x 39.4"		

## CELLS



## COLORS

Material	PE	PP		
Colours	Prime	Prime	NTP	Recy
Green	X	X	X	✓
Green UV RAL 6001	X	X	✓	X
Grey	X	X	X	✓
Grey RAL 7001	X	X	✓	X
Grey RAL 7037 UV	X	✓	X	X
White RAL 9010 UV	X	✓	X	X
White RAL 9010	X	X	✓	X
Beige RAL 7032 UV	X	✓	X	X
Black	X	X	X	✓

The above colours are indicative only and do not represent true colours. With recycled panels, variation in colours and colour tones is possible. You will find the lead time and minimum order quantities in the price list. Not every colour is available in every size. The panels are available in other colours on request. Contact us for more information.

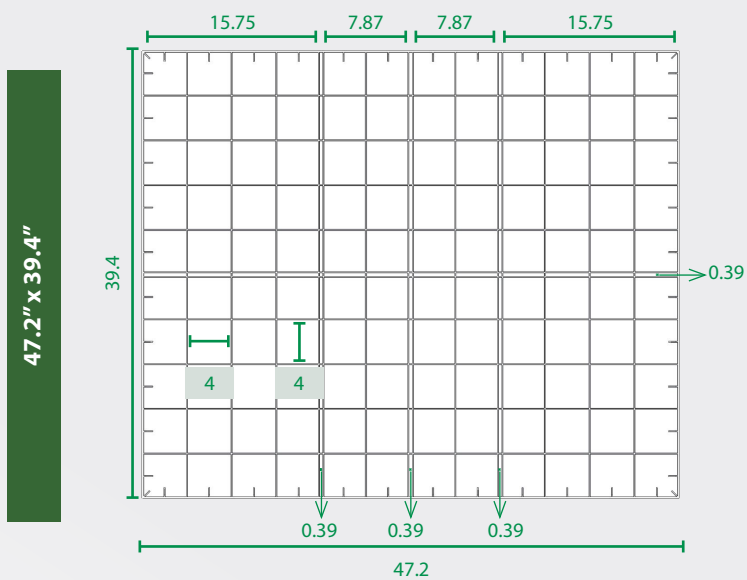
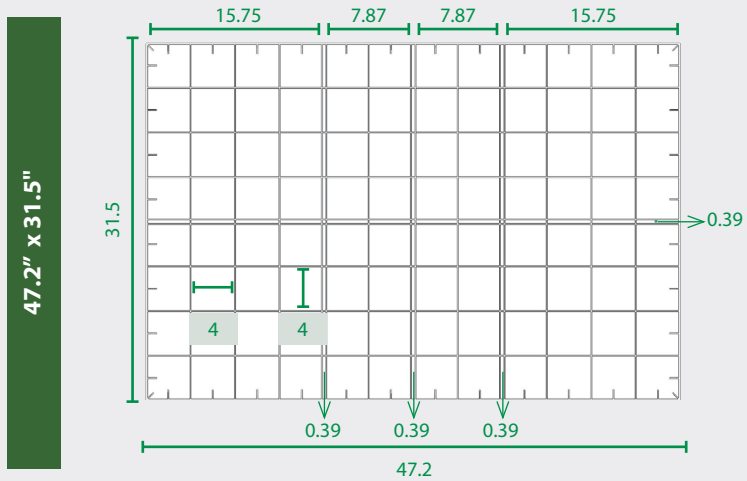


**SCAN THE CODE & FIND OUT  
MORE ABOUT THE ULTRALIGHT  
PANEL!**



# Paneltim® Ultralight

## THE PANELTIM® ULTRALIGHT PANEL, A LOOK INSIDE\*:



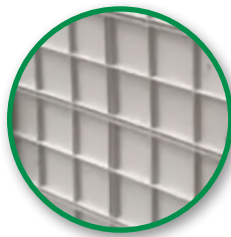
# Paneltim® Ultralight

## REASONS FOR CHOOSING THE PANELTIM® ULTRALIGHT PANEL:

- ✓ Lightweight
- ✓ Flexible dimensions
- ✓ Double ribs permit two closed edges with one single cut
- ✓ Time savings due to short welding cycle
- ✓ Corrosion resistant
- ✓ 100% recyclable

## FLEXIBLE DIMENSIONS

Paneltim® Ultralight panels have three double ribs down the length and one double across the narrower width. This makes it easy to cut the panels to standard sizes while keeping the edges closed. This offers easy installation field cuts.



## SIMPLE PROCESSING

Paneltim® Ultralight panels are easily processed with standard hand tools such as saws, drills, routers and welding. The panels can be welded to various dimensions using three welding methods: hot air welding, extrusion welding, and butt welding. Due to the panels' light weight, large dimensions created in this way are surprisingly easy to handle.



Mail: [sales@paneltim.com](mailto:sales@paneltim.com)  
**WWW.PANELTIM.COM**

# Paneltim® Lightweight





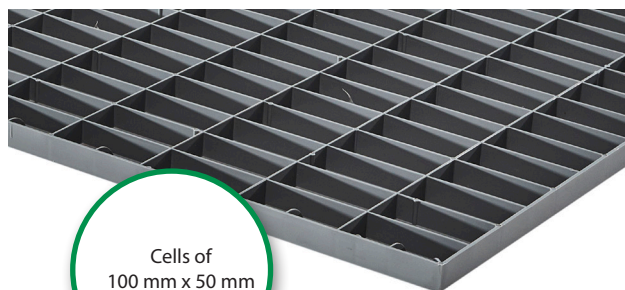
# Paneltim® Lightweight

## THE LIGHTWEIGHT PANEL IN DETAIL ...

Paneltim® Lightweight panels are lighter, but still strong and rigid with good resistance to deflection under load and suitable for many applications.

Surface	Edges	Material	Thickness (inch)	Cells (inch)	Dimensions (inch x inch)	Wall thickness (inch)	Weight (lb/ft²)
2 smooth faces	4 closed smooth edges	PP	0.8" nom.	2" x 4" nom.	47.2" x 39.4"	0.138"	1.577
			2" nom.		47.2" x 31.5"		
					102.4" x 39.4"		2.048
					47.2" x 39.4"		
		PE			47.2" x 31.5"		2.253
			102.4" x 39.4"				

## CELLS



Cells of  
100 mm x 50 mm

## COLORS

Material	PE	PP		
Colours	Prime	Prime	NTP	Recy
Green	X	X	X	✓
Green UV RAL 6001	X	X	✓	X
Grey	X	X	X	✓
Grey RAL 7001	X	X	✓	X
Grey RAL 7037 UV	X	✓	X	X
White RAL 9010 UV	✓	✓	X	X
White RAL 9010	X	X	✓	X
Beige RAL 7032 UV	X	✓	X	X
Black	✓	X	X	✓
Blue RAL 5002	X	X	✓	X

The above colours are indicative only and do not represent true colours.  
With recycled panels, variation in colours and color tones is possible.

You will find the lead time and minimum order quantities in the price list. Not every color is available in every size. The panels are available in other colours on request. Contact us for more information.

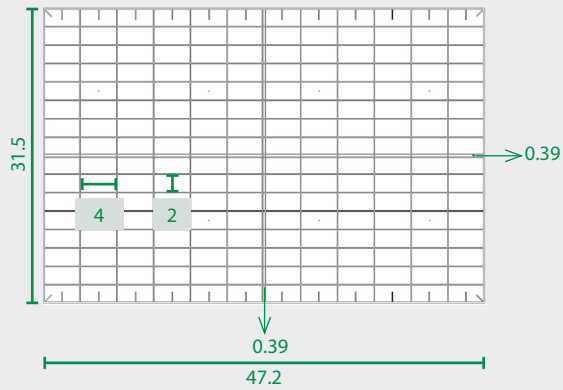


SCAN THE CODE & FIND  
OUT MORE ABOUT THE  
LIGHTWEIGHT PANEL!

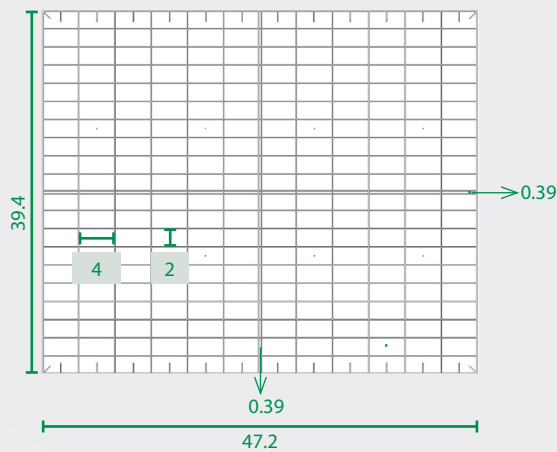
# Paneltim® Lightweight

## THE PANELTIM® LIGHTWEIGHT PANEL, A LOOK INSIDE\*:

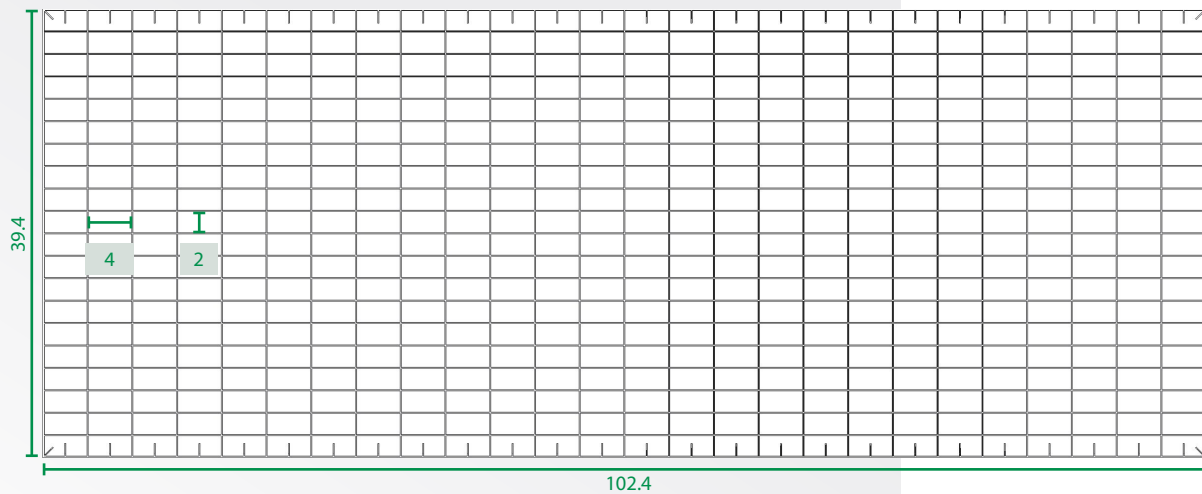
47.2" x 31.5"



47.2" x 39.4"



102.4" x 39.4"



\*All sizes are given in inch.

# Paneltim® Lightweight

## REASONS FOR CHOOSING THE PANELTIM® LIGHTWEIGHT PANEL:

- ✓ Lightweight
- ✓ Different thicknesses
- ✓ Long lifespan
- ✓ Time savings due to short welding cycle
- ✓ Corrosion resistant
- ✓ 100% recyclable

## FLEXIBLE SIZING

Paneltim® Lightweight Panels measuring 47.2" x 39.4" and 47.2" x 31.5" always have a double rib (cross) in the centre. They are therefore easily turned into panels with heights of 19,7" or 23.6".



## CABINS AND TRAILERS

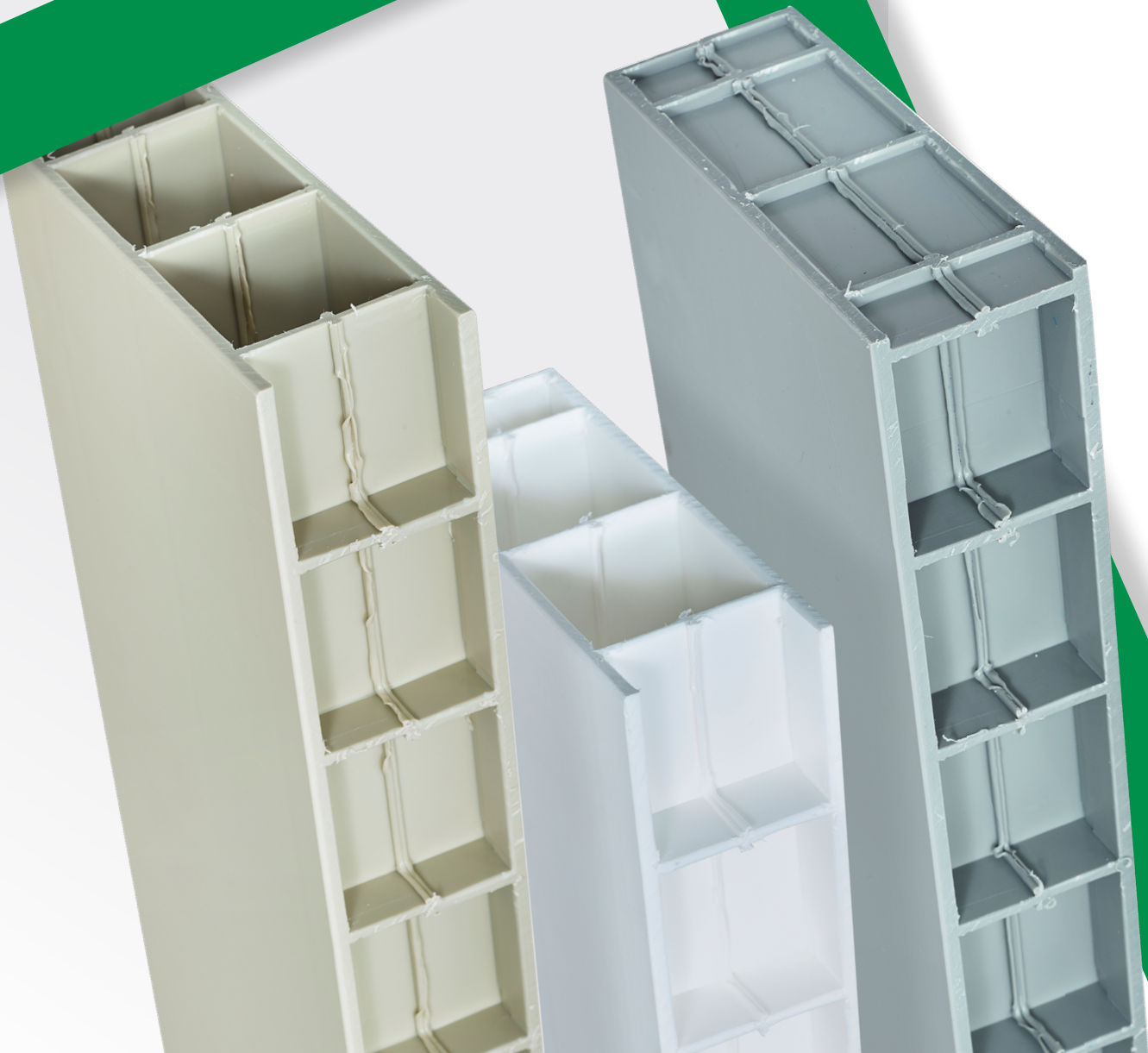
Paneltim® panels in polypropylene copolymer (CoPP) or polyethylene (HDPE) are lighter and stronger than most other construction panels out of solid plastic. This makes Paneltim® panels an excellent choice for construction of trailers, beach cabins, etc. The Paneltim® Antislip panels are an ideal addition to your cabin or trailer, as they considerably improve antiskid properties in both dry and wet conditions.



Mail: [sales@paneltim.com](mailto:sales@paneltim.com)  
**WWW.PANELTIM.COM**



# Paneltim® Multipower



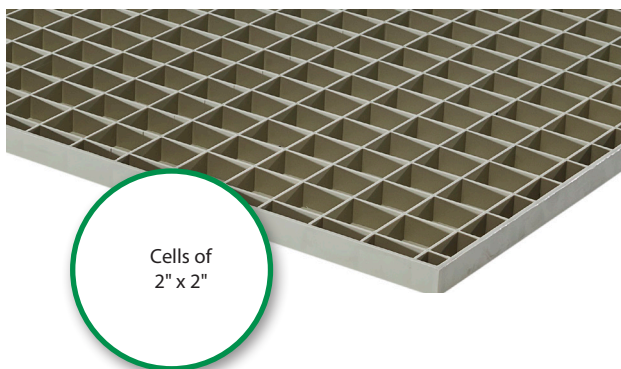
# Paneltim® Multipower

## THE MULTIPOWER PANEL IN DETAIL ...

Paneltim® Multipower panels are the strongest and most robust within the Paneltim® range.

Surface	Edges	Material	Thickness (inch)	Cells (inch)	Dimensions (inch x inch)	Wall thickness (inch)	Weight (lb/ft <sup>2</sup> )
2 smooth faces	4 closed smooth edges	PP	2" nom.	2" x 2" nom.	102.4" x 39.4"	0.169"	2.622
					47.2" x 39.4"	0.130"	2.437
		PE			102.4" x 39.4"	0.177"	2.826

### CELLS

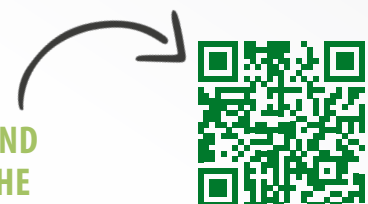


### COLORS

Material	PE	PP		
Colours	Prime	Prime	NTP	Recy
White RAL9010 UV	✓	✓	X	X
Beige RAL7032 UV	X	✓	X	X
Grey RAL7037 UV	X	✓	X	X
Grey	X	X	X	X
Grey RAL 7001	X	X	✓	X
Black	✓	X	X	X

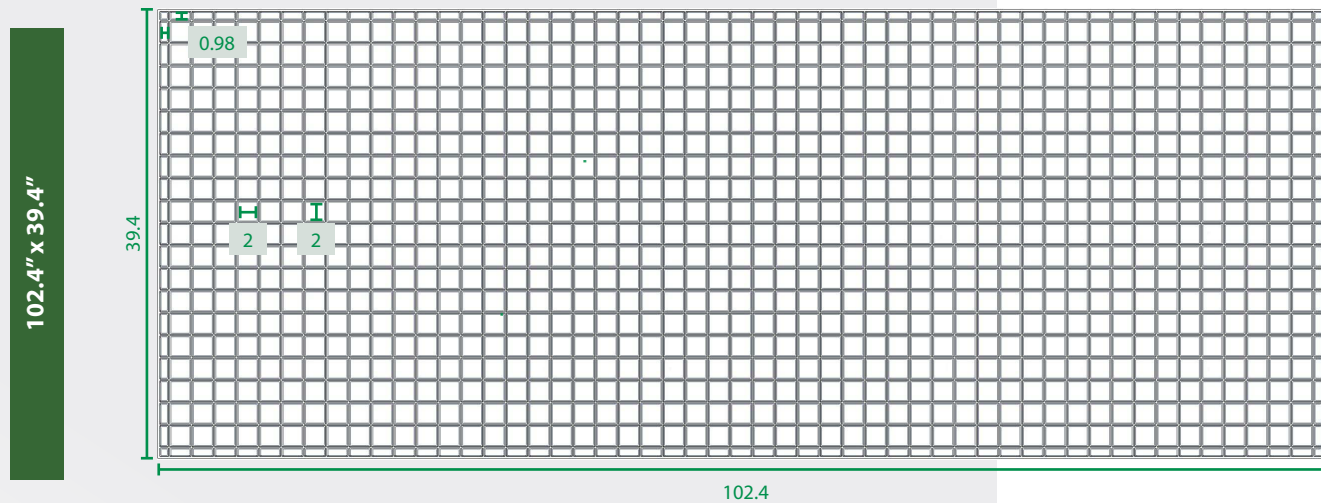
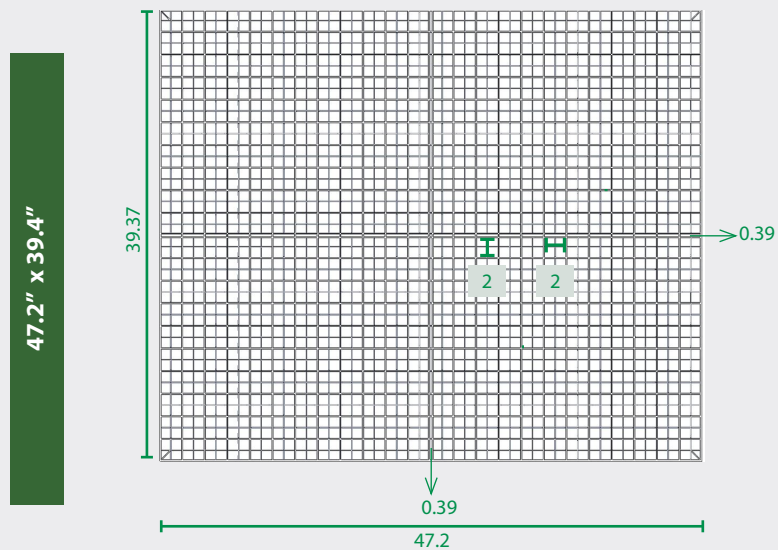
The above colours are indicative only and do not represent true colours. With recycled panels, variation in colours and colour tones is possible. You will find the lead time and minimum order quantities in the price list. Not every colour is available in every size. The panels are available in other colours on request. Contact us for more information.

SCAN THE CODE & FIND  
OUT MORE ABOUT THE  
MULTIPOWER PANEL!



# Paneltim® Multipower

## THE PANELTIM® MULTIPOWER PANEL, A LOOK INSIDE \*:



# Paneltim® Multipower

## REASONS TO USE OUR MAXIMUM STRENGTH MULTIPOWER PANEL:

- ✓ Light yet rigid
- ✓ Balanced flex-strength, length vs width
- ✓ Weldable to any size
- ✓ Can be used in confined spaces
- ✓ Corrosion resistant
- ✓ Long-term data for tank design and optimization
- ✓ Shorter welding cycles vs solid plastic
- ✓ 0.98" perimeter trim/weld allowance
- ✓ 100% recyclable

## LESS MATERIAL LOSS

On the 102.4" x 39.4" panels, the perimeter cells are 0.98" wide along all edges. When welded to another panel they maintain the factory cell dimensions. As a result, less material is lost (2%) during mirror welding.

## ROBUST APPLICATIONS WITH PANELTIM® MULTIPOWER

Thanks to their small internal cell structure and thicker face and rib structures, Paneltim® Multipower panels are extremely strong. The cells ensure that the panels have excellent bending resistance in all directions. This makes Paneltim® Multipower suitable for applications where rigidity and strength are important.



Mail: [sales@paneltim.com](mailto:sales@paneltim.com)  
**WWW.PANELTIM.COM**



# Paneltim® Venti®



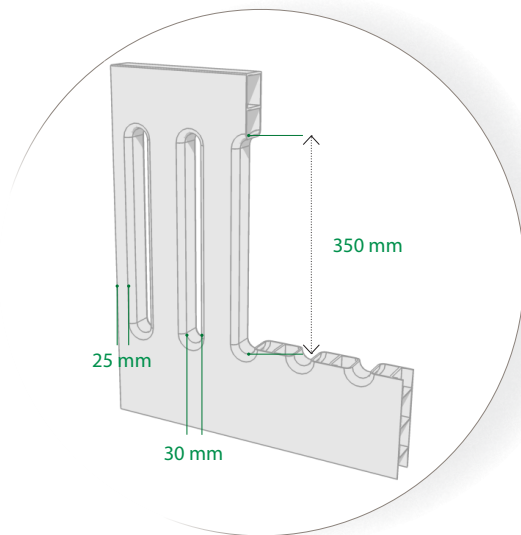
# Paneltim® Venti®

## THE VENTI® PANEL IN DETAIL ...

Paneltim® Venti® panels have vertical openings, making them extremely suitable for promoting airflow.

Panel	Edges	Structure	Thickness (mm)	Cells (mm)	Dimensions (mm x mm)	Openings	Wall thickness (mm)	Weight (kg/m²)
Venti® 35	4 closed smooth edges	PP	1-3/8" nom.	2" x 4" nom	47.2" x 39.4" 47.2" x 31.5"	1 row: 13.78" x 1.18" every 3.94"	0.138"	1.598
Venti® 50			2" nom.	4" x 4" nom	47.2" x 39.4"	1 row: 13.78" x 1.18" every 3.94"		1.925
Double Venti®				4" x 4" nom		2 rows: 13.78" x 1.18" every 3.94"		2.314

## OPENINGS



## COLORS

Colors	Venti® 50		Venti® 35		Double Venti®			NEW
	NTP	PC-Recy	NTP	PC-Recy	NTP	PC-Recy	CL-Recy	
Green	X	✓	X	✓	X	X	✓	
Green UV RAL 6001	✓	X	✓	X		X	X	
Grey	X	✓	X	✓		✓	X	
White RAL 9010	✓	X	✓	X		X	X	
Black	X	✓	X	✓		X	✓	
Orange	X	X	X	X		X	✓	

The above colors are indicative only and do not represent true colors.

With recycled panels, variation in colors and color tones is possible.

You will find the lead time and minimum order quantities in the price list. Not every color is available in every size. The panels are available in other colors on request. Contact us for more information.

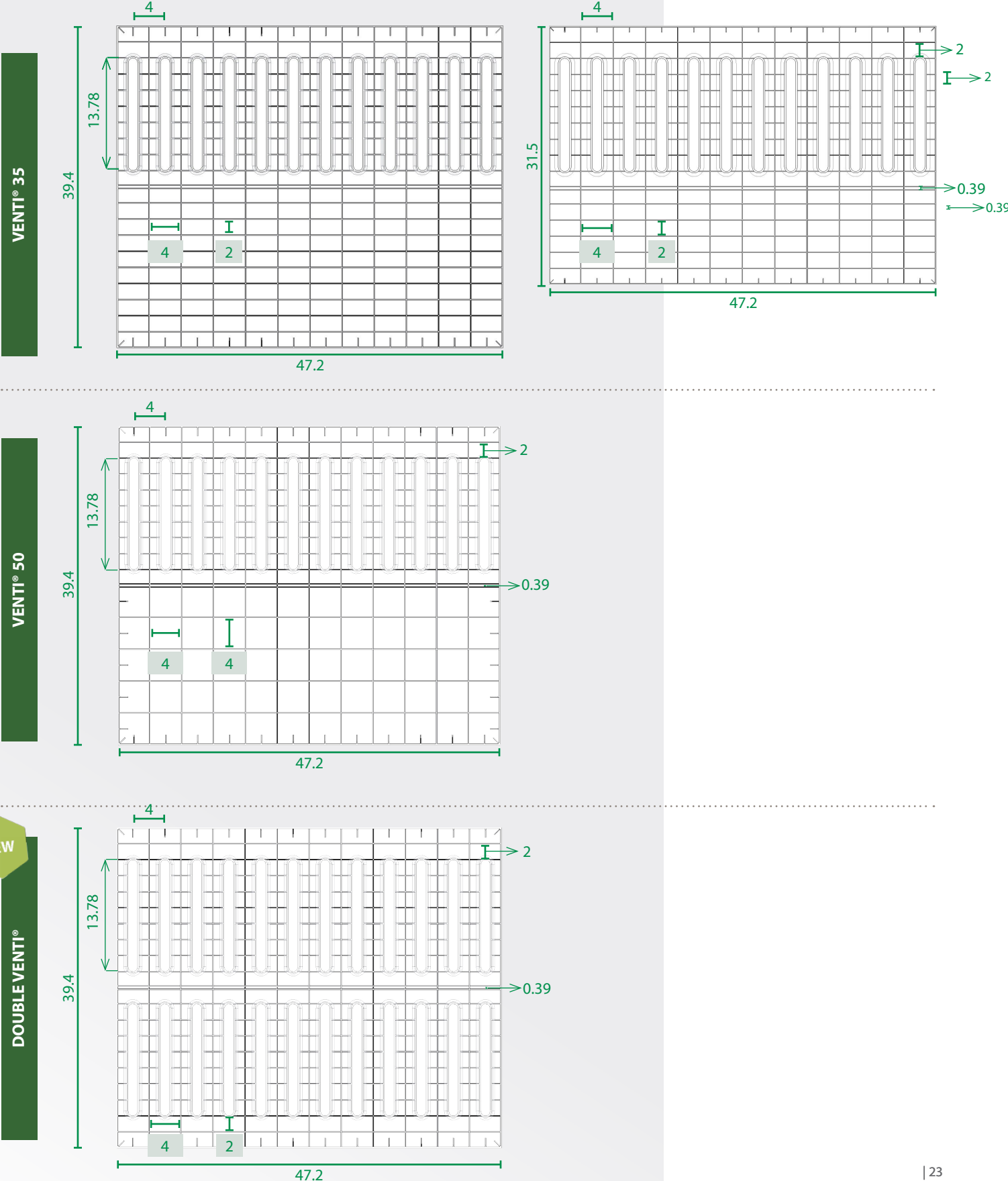
CL-Recy = Closed Loop Recycling sourced materials

PC-Recy = Post Consumer Recycling sourced materials

SCAN THE CODE & FIND OUT  
MORE ABOUT THE VENTI®  
PANEL!



THE PANELTIM® VENTI PANEL, A LOOK INSIDE\*:



\*All sizes are given in inch.

## REASONS FOR CHOOSING THE PANELTIM® VENTI® PANEL:

- ✓ Better air circulation
- ✓ Reduces stress through visual contact
- ✓ Managing excretory behavior
- ✓ Optimal hygiene
- ✓ Light but strong
- ✓ Simple processing
- ✓ Quick assembly
- ✓ 100% recyclable

## SMART SOLUTIONS BY PANEL FABRICATING

When one part of the pen partition must be closed and another requires venti slits, combining 1-3/8" Paneltim® Venti® panels with 1-3/8" Paneltim® Ultralight panels offers a solution for **smaller animals**. For **large animals**, combine 2" Paneltim® Venti® with 2" Paneltim® Lightweight to build structures with even more possibilities, single panel lengths up to 19.7 ft can be supplied.

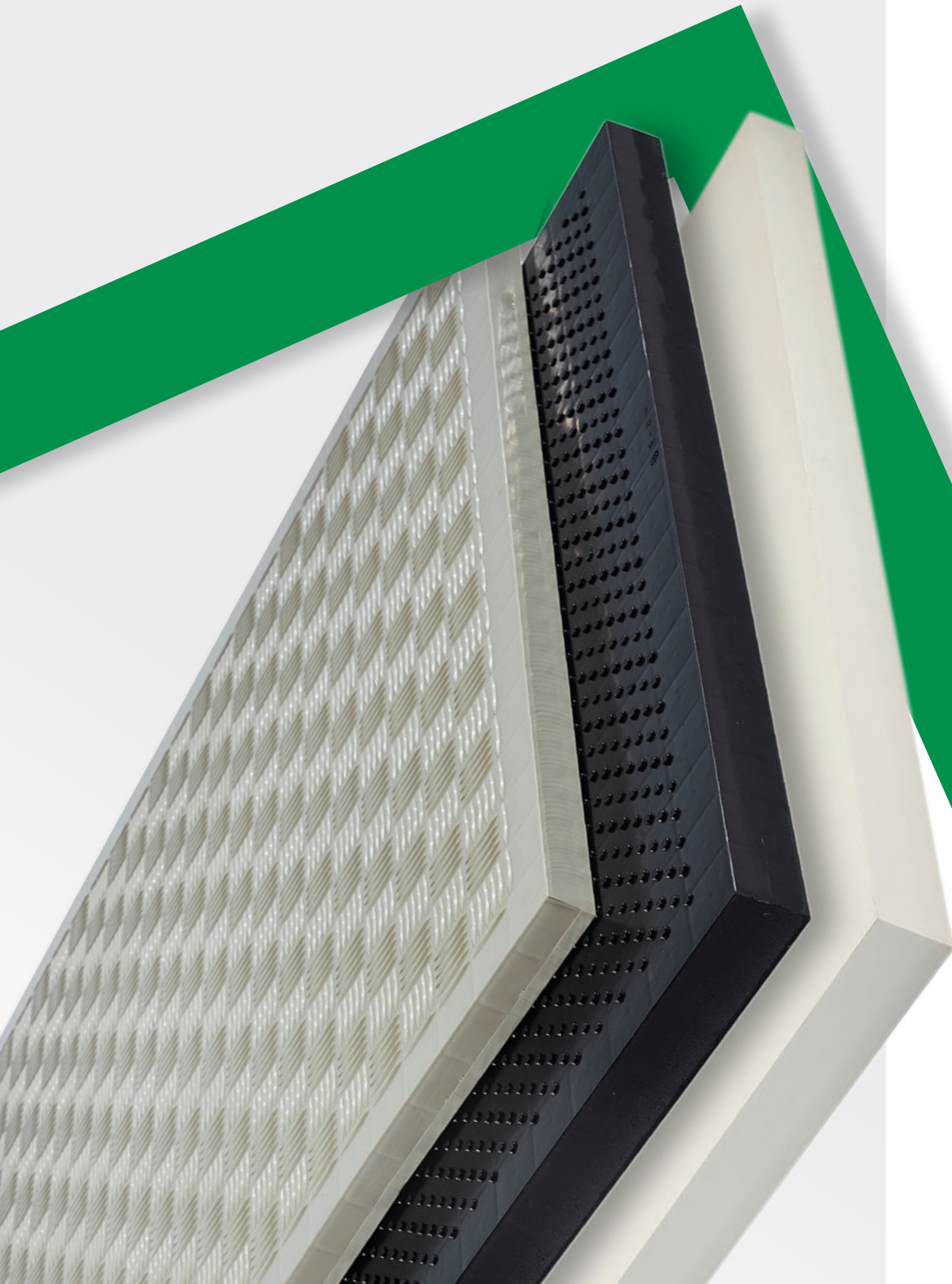


## CUSTOMIZATION

Venti® panels can be cut to size with variable heights using hot plate welding. The number of slots can also be limited or a combination panel can be made that consists partly of closed panels and partly of Venti® panels. This gives you a quick and easy solution for managing the excretory behavior of animals.



# Paneltim® Antislip





# Paneltim® Antislip

## THE ANTISLIP PANEL IN DETAIL ...

Paneltim® Antiskid panels can support walking and rolling loads and are perfect for non-slip floors in a variety of applications. They are available with 5 bar, studded, or orange peel textures.

Surface	Edges	Material	Thickness (inch)	Cells (inch)	Dimensions (inch x inch)	Wall thickness (inch)	Weight (lb/ft <sup>2</sup> )
1 smooth 1 five bar	4 closed smooth edges	PP	2" nom.	2" x 2" nom.	47.2" x 39.4"	0.13	2.540
1 smooth 1 Studs	4 closed smooth edges	PP					2.458
2 orange peel sides	4 closed smooth edges	PP					2.314

Other colours & PE panels also available on request with a minimum order quantity.

## VARIATIONS



STUDS



5 BAR



ORANGE PEEL

## COLORS

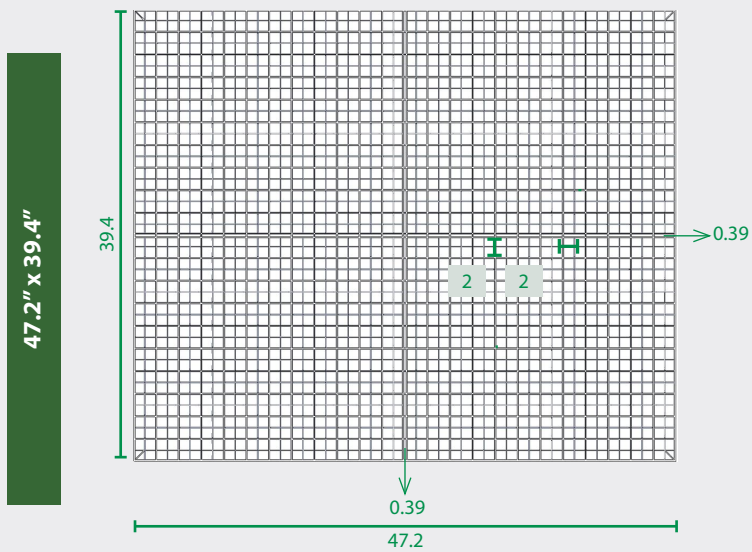
Material	PE	PP		
Colours	Prime	Prime	NTP	Recy
Grey	X	X	X	✓
White RAL 9010 UV	X	✓	X	X
Beige RAL 7032 UV	X	✓	X	X
Black	X	X	X	✓

The above colours are indicative only and do not represent true colours. With recycled panels, variation in colours and colour tones is possible. You will find the lead time and minimum order quantities in the price list. Not every color is available in every size. The panels are available in other colours on request. Contact us for more information.

SCAN THE CODE & FIND OUT  
MORE ABOUT THE ANTISLIP  
PANEL!



## THE PANELTIM® ANTISLIP PANEL, A LOOK INSIDE\*:







# Paneltim® Antislip

## REASONS FOR CHOOSING THE PANELTIM® ANTISLIP PANEL:

- ✓ Slip resistance (even when wet)
- ✓ Easy to process
- ✓ Easy to clean
- ✓ Corrosion resistant
- ✓ No water absorption
- ✓ 100% recyclable
- ✓ Wear-resistant

## SLIP RESISTANCE

Slips and falls are the most common causes of accidents in and around the workplace. Tests\* show that the 3 Paneltim® Anti-slip panels have a slip resistance in both wet and dry conditions. Whereas the studded and 5 bar panels score well when used in areas where shoes are worn (R10 according to DIN 51130 standard), the orange peel surface scores well for both walkability with shoes and with bare feet (R10 according to DIN 51130 standard and B according to DIN 51097 standard).

Paneltim® Antislip	Standard		Class
Studs	DIN 51130		R10
5 bar	DIN 51130		R10
Orange Peel	DIN 51130		R10
	DIN 51097		B



## APPLICATION AREAS

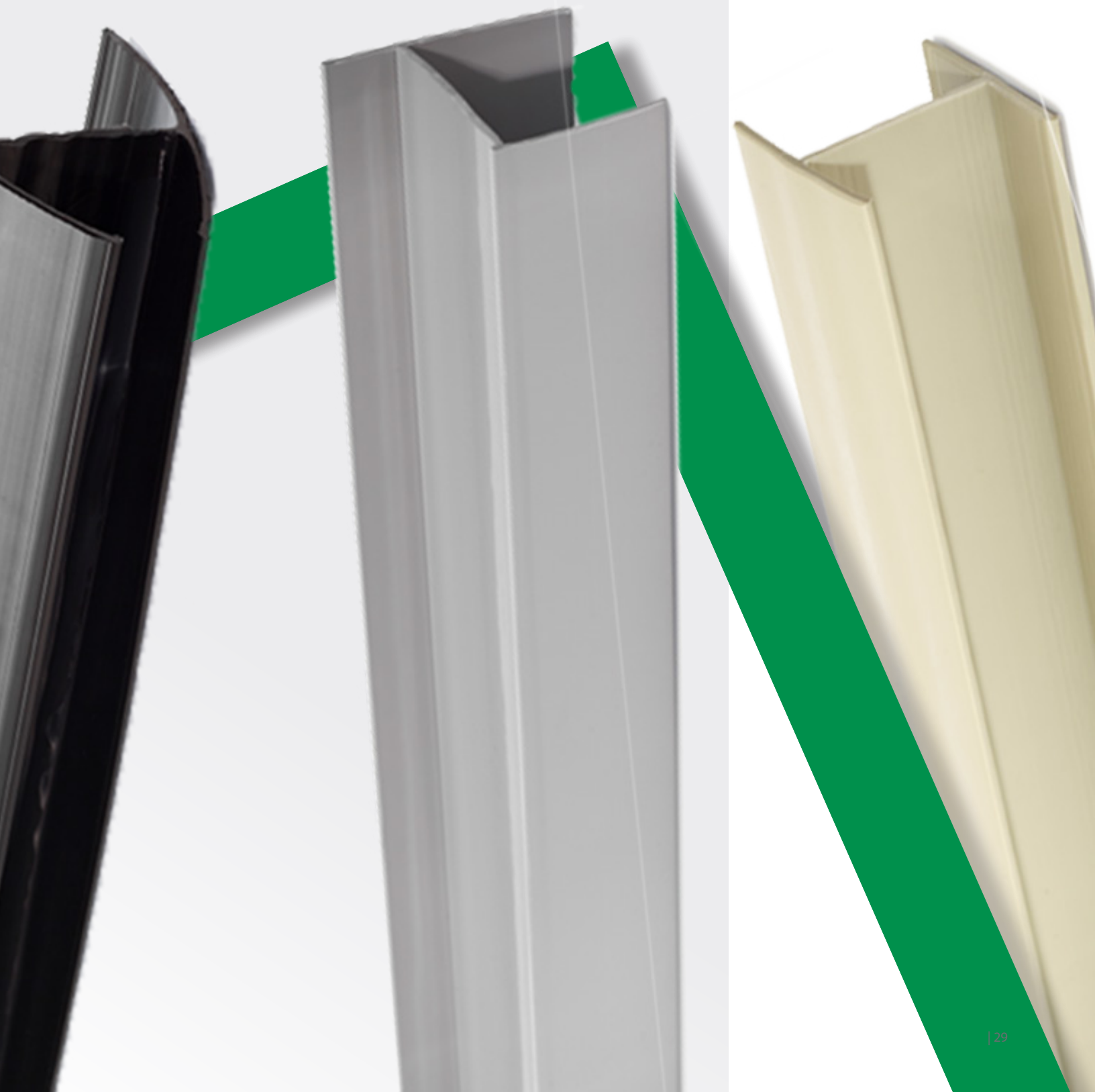
Paneltim® Antiskid panels provide an effective anti-slip solution. You can use them for platforms in stables, aisles or stairs, and sanitary rooms and toilets.



Mail: [sales@paneltim.com](mailto:sales@paneltim.com)  
**WWW.PANELTIM.COM**

\* Tests conducted only on PP material.

# Profiles



# Profiles

## PP-PROFILES

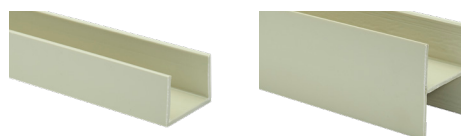
### WHITE

PP	U-profile	1.97"	118.11"	10	30
PP	H-profile	1.97"	118.11"	10	30



### BEIGE

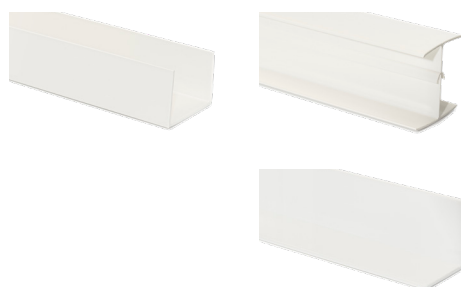
PP	U-profile	1.97"	118.11"	10	30
PP	H-profile	1.97"	118.11"	10	30



## PVC-PROFILES

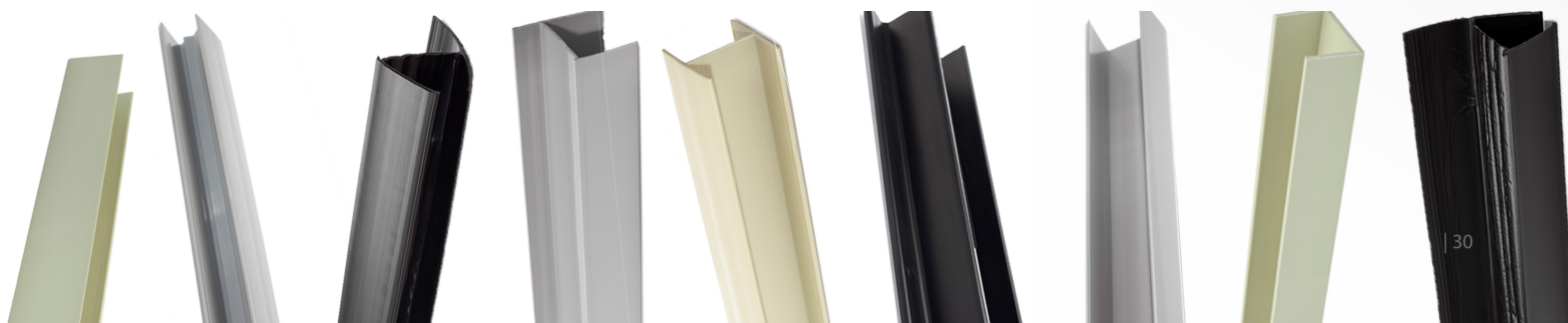
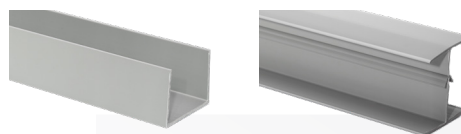
### WHITE

PVC	U-profile	1.97"	118.11"	10	30
PVC	H-profile with V	1.97"	118.11"	10	30
PVC	L-profile	1.97"	118.11"	10	30



### LIGHT GREY

PVC	U-profile	1.97"	118.11"	10	30
PVC	H-profile with V	1.97"	118.11"	10	30





# Profiles

Although strong structures are best achieved by welding panels together, Paneltim also offers a limited range of edge fastening and finishing parts. These offer the possibility of quickly making light, yet sturdy and hygienic applications.

## PANELTIM® H AND U PROFILES

Paneltim® H and U profiles considerably speed up the creation of (lighter) constructions with Paneltim® panels. The profiles are both strong and durable, easy to process and to clean. Thanks to these profiles, creativity with Paneltim® panels really knows no limits.

## MATERIAL

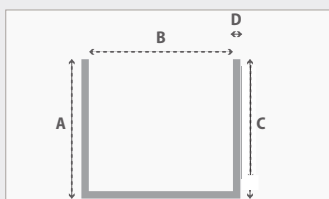
Paneltim® H and U profiles are made from PP or PVC.

PP has the characteristic that it is very sturdy, durable and easy to process and to clean. On top of that, PP profiles can be welded to our PP panels with the appropriate tools such as an hot air welder. Thanks to the addition of a UV stabilizer, the profiles are also UV-resistant.

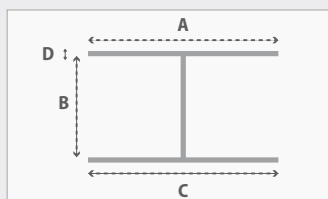
PVC profiles are sturdy, durable and have a tighter fit on the panels, however they cannot be welded to our PP panels. These economical PVC H profiles are commonly used for partition walls constructions, they have a flex-point design feature to allow for thermal expansion.

## DIMENSIONS AND COLOURS

**Paneltim® PP U-profile**



**Paneltim® PP H-profile**



Profile	A inch	B inch	C inch	D inch	Length inch	Colors
U-profile	1.97"	1.97"	1.18"	0.18"	118.11"	White RAL 9010 Beige RAL 7032
H-profile	2.52"	1.97"	2.52"	0.18"	118.11"	White RAL 9010 Beige RAL 7032

## MOST IMPORTANT BENEFITS

- ✓ Identical polymer to panel and welding wire
- ✓ Simple processing
- ✓ Windproof sealing of seams
- ✓ Prevents penetration of dirt and bacteria
- ✓ UV resistant
- ✓ Low maintenance
- ✓ Impact resistant

## USES

### CONNECTION OF PANELS

Thanks to PP H and U profiles you can quickly connect Paneltim® panels to each other.

### FIX PANELS TO FLOORS, WALLS AND CEILINGS

Screw U profiles to floors, walls and ceilings, place the Paneltim® panels in there and weld them to the profile.

### OPTIMAL FINISH

You can easily and neatly cover any open cells of a custom-cut Paneltim® panel with a U profile. PP H and U profiles ensure a perfect finish so that, once the profiles are welded to the panels, liquids and dirt have no chance to penetrate the panels.

## POINTS OF ATTENTION

Not suitable for liquid applications and weight bearing applications.

Take into account the possible expansion.

### PP U-PROFILE

To connect panels.  
To cover open cells.



### PP H-PROFILE

To connect panels.



# Raw materials for Paneltim® panels

## PRIME, NEAR-TO-PRIME & RECY

Paneltim® panels are available in a wide range of options: in addition to the choice between PP copo and HDPE, you can choose from 3 different resin grades: prime, near-to-prime or recycled raw materials.



Prime raw materials

### PRIME

Prime quality refers to virgin material with documented specifications. When your application has tighter tolerances in mechanical properties it is advisable to work with Paneltim® panels made from prime quality plastic. The mechanical properties can be verified in the Paneltim® Technical Standard (PTS).

Over the years, Paneltim® has invested heavily in the research and development of our prime panels. We therefore have long-term data on the basis of which you can, for example, make reliable calculations and finite element analysis (FEA).



Near-to-prime raw materials

### NEAR-TO-PRIME (NTP)

The properties of Near-to-prime or "wide-spec" material may deviate to a certain extent from the specifications of prime material. Even though the quality of NTP is very high, the mechanical properties may deviate as the sources may vary.

Minimal technical or visual deviations may appear and long-term calculations cannot be made. Therefore, the PTS is not applicable to our wide-spec panels. However, for certain applications this may not be necessary and near-to-prime quality may suffice.



Recycled raw materials

### RECYCLED

50% of the panels produced by Paneltim® are made from 100% recycled raw materials. Paneltim® uses both "post-industry" and "post-consumer" reprocessed feedstocks.

These raw materials are inspected both externally and internally in the Paneltim® lab. We want our recycled panels to remain true to our light, strong and hygienic principles. Because this material is not always single source material, long-term data cannot be provided. Colors will vary with recycled panels, mixed color contaminations and fillers all contribute to this variability.







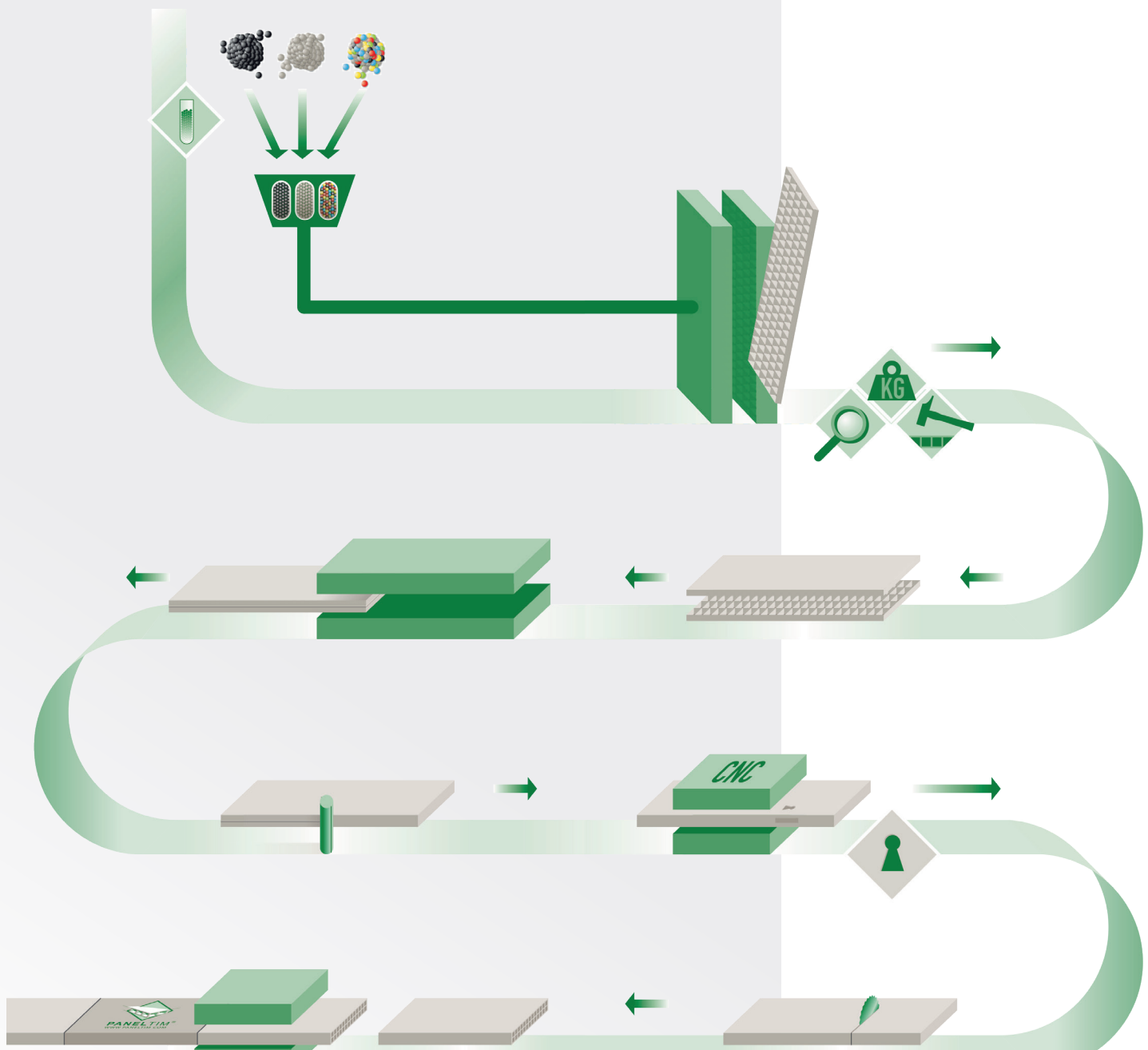
# Production: from granule to panel

Prime and near-to-prime raw materials enter Paneltim as round granules, recycled raw materials generally as grind (flakes).

The raw materials are mixed in mixing machines with the necessary pigments - also known as "masterbatches" - and possibly other additives such as UV stabilisers or fire retardants.

Half panels are then injection molded under high pressure in various injection molding machines. The injection molding machines that Paneltim uses for this are among the largest in Europe. They have a clamping force of 1600, 1850, 3300 and 4000 metric tons.

The half panels are then welded together by large automated mirror welding machines, after which they are stacked on pallets.





Distributed by:

**PANELTIM USA LLC**

25000 Trans-X Dr.

Novi, MI 48375

USA

T: +1 513 652 1080

E: sales@paneltim.com

E: engineering@paneltim.com

**PANELTIM nv**

Industrielaan 38

I.Z. Kwakkel C3

8810 Lichtervelde

Belgium

T: +32 (0)51 72 67 60

E: sales@paneltim.com

E: engineering@paneltim.com



**WWW.PANELTIM.COM**